

THE Orca PANEL



Orca Panel Dimensions: 20" x 20" x 8"

SitePro's new standalone well control and monitoring solution includes affordable but powerful hardware in a simplified panel, plus access to existing core software features including remote control, live monitoring, and reports.

APPLICABLE INPUT SIGNALS

Analog	Pressure, Temperature, Actuator Feedback, Etc.
Digital	Control and Feedback for Pump Panels
Modbus	Monitor Data from Serial Modbus Devices. Flow Meters, VFDs, Etc.

I/O MODULES

Type	Quantity	Channels	Pre-Wired
Analog Input	1	8	2
Analog Output	1	4	1
Digital Input/Output	1	8/8	1/1

POWER SUPPLY

Input	Output	Current
120VAC	24VDC	5A

COMMUNICATION PORTS

COM-1	RS-485
COM-2	RS-485

Orca KILLER WELL CONTROL

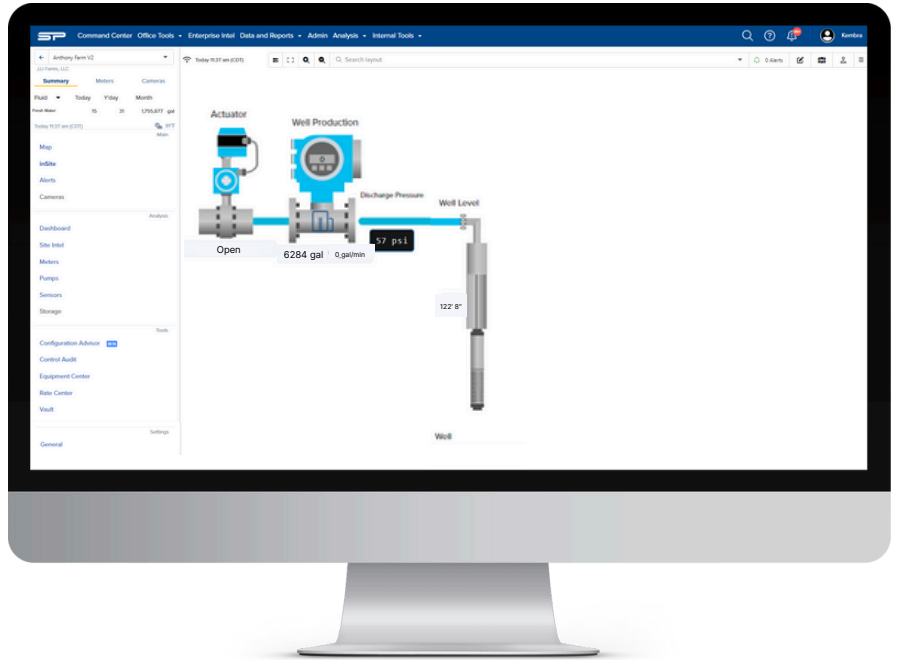
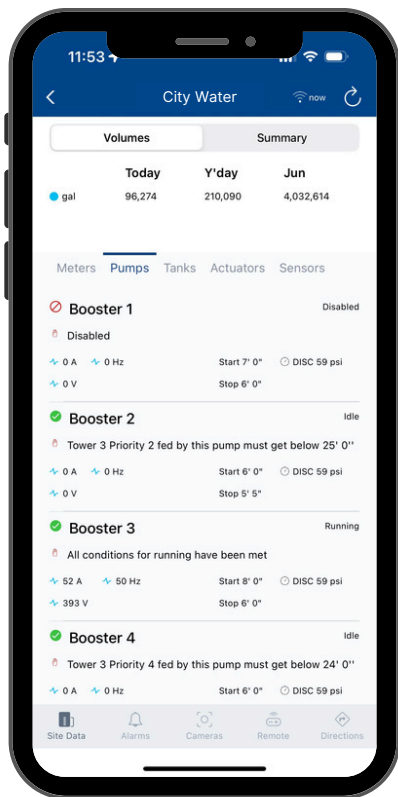


SITEPRO[®] Orca

KILLER WELL CONTROL

MONITOR

Check equipment status, run reports, and see live data on your water infrastructure.





CONTROL


Our patented remote control in the SitePro browser and mobile app gives you total power over your equipment from anywhere. Plus, you can easily adjust your automation and set points within the software. No internet? No problem. In case of an outage, your control remains in-tact locally and the cloud automatically updates as soon as connection is restored.

AVAILABLE EXCLUSIVELY FROM



 www.sitepro.com

 806-687-5326

 sales@sitepro.com

